



# An interview with Hannah Whitmore

## Amphenol Invotec's new Head of Environment and Sustainability

### Q. What is your official business title?

A. Environmental, Health, Safety and Sustainability Manager..

### Q. What is involved in your new role as EHSS Manager ?

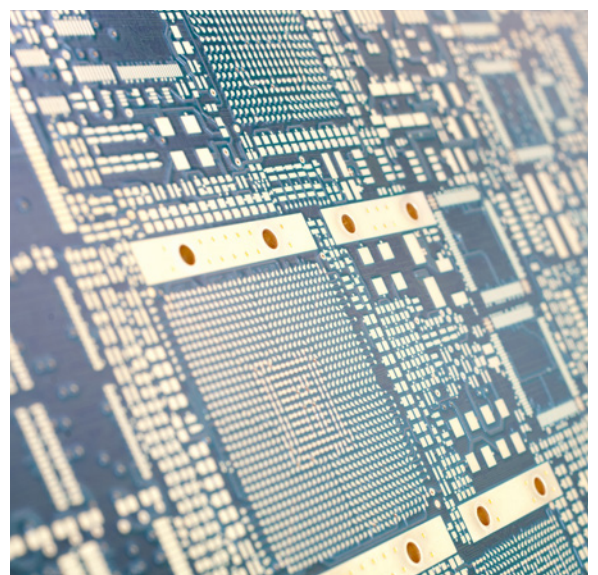
A. In Health and Safety, it involves working closely with the operations team from the Operators to the Management to make sure that we make our PCBs as safely as we possibly can. A lot of that is education and working with the team to implement procedures that are not too onerous, they hold a lot of information and must have input for a workable solution, it is important to strike the balance with safety to ensure buy in and effective implementation.

For Sustainability and Environmental elements of my role, I look to minimise the amount of energy and resources that we're using with a team of people from across the business. Plating and making PCB boards is a very energy and water-heavy process, we look to reduce the amounts used without impacting on product quality or delivery. This can be as simple as having discipline to turn off equipment when it is not being used, better controls on our equipment to large investment in newer more energy efficient equipment.

I also support the maintenance of our ISO14001 open standard and having such a knowledgeable and supportive team already in place has been invaluable in my first few months. This also feeds into corporate and government reporting and benchmarking across our industry. The business has set some challenging targets and those will be in mind as we start the new year.

### Q. Did you work in sustainability before your joined Amphenol Invotec?

A. Prior to working for Amphenol Invotec, I worked in timber framed modular housing. Our sustainability centred around our carbon content of our products and environmentally, our process had little impact.



So, Health and Safety played a far larger part of my job. At Amphenol Invotec, the split is more equal. With the additional change in process, the consideration of the COSHH controls and the environmental and sustainability targets requiring focus, it's been a very vertical learning curve.

We're fortunate that our environmental processes are robust and that the team here are very knowledgeable in respect of the process and controls which has certainly made the transition easier.

### Q. What do you enjoy most about your new role?

- A. I think the thing that I enjoy the most is that I've come into a really well-established team. Many of them have been here a very long time and have a wealth of knowledge and everybody's willing to share that with me. It's been very easy to integrate. There is a lot to do, but when everyone agrees on the priorities it's easy to offer support and feel that you are adding value as a new member of the team.

### Q. How is Amphenol Invotec working towards being a more sustainable manufacturer of PCBs?

- A. We report our sustainability and environmental targets, obviously internally, but to our wider group as well. We also benchmark against other PCB manufacturers across the country. To make sure that we are doing the best we can with the resources we have.

### Q. Where do you sit on that benchmarking?

- A. Currently near the top. But we've made a commitment to reduce energy usage by 10%. And our water by 20% which are very challenging targets. Our progress against these targets internally and within our industry is showing improvement but we know there is still more we can do.

### Q. What about sustainability for your UK facilities?

- A. These options have been considered previously, with the main challenge being availability of space at each of the factories. So, in the short term, what we're doing is trying to make our processes as lean as we can.

All of our electricity is from a renewable source and where possible we look to recycle water and all new equipment installations review energy efficiency before sign off.

### Q. Will Amphenol Invotec move to more eco-friendly transport?

- A. We are moving all our fleet across to electric vehicles. Any new vehicles that we order are going to be electric and we're looking to phase out our other vehicles at the end of their leases.

